



# GNHCC News & Notes

FEBRUARY 4, 2010

VOLUME 2, NUMBER 2

## Background Notes



## Candide

The novella, *Candide*, by [Voltaire](#), is a satirical study of optimism vs. pessimism.

The operetta, *Candide*, based on the novella, was originally produced at the Martin Beck Theatre, New York, on December 1, 1956

### Plot Synopsis

The novel tells the fantastic episodic journey of Candide, a young, naive [German](#), who believes wholeheartedly in philosophic optimism—"all is for the best . . . in this best of all worlds."—which he has learned from his mentor Dr. Pangloss. Raised by his uncle, the baron, Candide falls in love with the baron's young daughter, Cunégonde, and is expelled after being caught with her. This sets Candide on a journey around the world where he experiences the horrors of war, poverty, the maliciousness of man, and the hypocrisy of the church. His experiences lead him to doubt the accuracy of philosophical optimism.

## Important Details to Remember!



Here are a few critical reminders for everyone...whether you're a new member of GNHCC or a returning veteran.

- All music needs to be in a black binder—for rehearsals as well as performances. Hold binders up high so that you can see both your music and the Director
- Music should be tabbed so that you can quickly turn to the right piece to avoid wasted rehearsal time.
- Always have a **pencil** handy and use it to mark your scores with all the instructions we're given during rehearsals.
- If you haven't already done so, be sure to write in the translation for each phrase of Chichester Psalms. Every word doesn't have to match up exactly—but well enough so that you'll know the meaning of the text we're singing.



## Tenors and Basses—

This is your week to convince us you're the next best thing to Jacques Pépin. Please bring a yummy treat to share during our mid-break in rehearsal.

## Valentine Gift Basket



At our February 11th rehearsal, we will offer a romantic Valentine Gift Basket that will be awarded to the person fortunate enough to be holding the right ticket. If you have something special you'd like to contribute to the gift basket, please bring it **this week** and give it to Vickie Gerdon. She will be collecting the items to be included and preparing the basket for next week. If the holiday gift baskets in December are any indication, it will be quite impressive.



Reminder: If you ordered a CD from our December 12<sup>th</sup> concert, and have not yet picked it up, please remember to purchase it during rehearsal this week. If you can bring the exact amount of \$13, it would be much appreciated!



If you missed last week's rehearsal...learning CDs are now available to help with learning both **Chichester Psalms** and **Make Our Garden Grow**. Be sure to pick up your copy this week. The CDs are specific to each vocal part—in divisi. That is, there is a unique CD for each of:

- Soprano I
- Soprano II
- Alto I
- Alto II
- Tenor I
- Tenor II
- Bass I
- Bass II

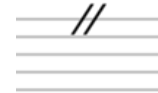
This semester, there is no charge to GNHCC singers for these learning CDs. If you have any questions about how to get the most out of the CDs, please ask.



## Tick, Tock

Time goes by so quickly! The registration period for GNHCC Memberships for this semester will close soon and all dues should be paid by February 18th. Don't wait 'til the last minute – please remember to pay your membership dues as soon as possible. \$40 for individuals; \$60 for couples.

## Did you know...?



The symbol that looks like a double forward slash at the top of a musical staff is called a **Caesura**. A Caesura denotes a brief and **complete** cessation of musical time—a silent pause—during which time is not counted. In ensemble playing or singing, time resumes when so indicated by the conductor.

## Lock In These Dates On Your Calendar

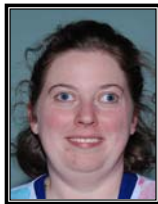


It is essential for everyone to participate in the following rehearsals and performances.

Please, mark your calendars now!

June 3, 2010	Rehearsal at Battell Chapel, New Haven
June 6, 2010	Pre-concert at Jewish Community Center, Woodbridge
June 8, 2010	Rehearsal at Battell Chapel, New Haven
June 10, 2010	Rehearsal at Battell Chapel, New Haven
June 12, 2010	Performance at Battell Chapel, New Haven

## Member Corner



Soprano II, **Liz Brennan**, joined GNHCC about a year ago. A native of the Woodstock, NY area (yes, **that** Woodstock – though she's way too young to remember the event!), Liz has been cheerfully helpful selling concert tickets and CDs, and assisting with the GNHCC database. She has a degree in computer science and works for a cardiology group in New Haven, where she assists with patient care as well as helping to keep the office's computer system in good order. Liz lives in Hamden with her husband, Michael, an engineer at Sikorsky Aircraft, and their soon-to-be 4 year old daughter, Caitlin.