

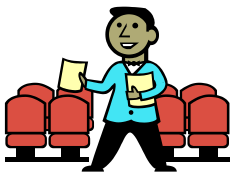


GNHCC News & Notes

MAY 27, 2010

VOLUME 2, NUMBER 18

Quick Notes:



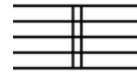
Ushers Needed:

We're still looking for one or two non-chorus people to serve as ushers for the concert. If you have a friend, spouse, or adult child who would be willing to assist, please contact Kathy McManus (kmcmanus1764@comcast.net).



Concert Tickets:

Some of you still have not picked up your envelope of concert tickets. Please remember to stop by the table at the back of the hall before rehearsal or during break. Remember, we're counting on everyone to sell at least 5 tickets. Thank you!



It's hard to believe, but this week is our last rehearsal in Pratt Hall this season. From here out—beginning on June 3rd, our rehearsals will be at Battell Chapel (except for the JCC concert). We will, however, return to Pratt Hall at 7:30 on June 24th for our end-of-season wrap-party and annual meeting.



Year-end Music Collection

This semester, the Music Committee will be trying a new system for collecting your music. Rather than simply turning in your music at the end of the concert, which ends up with the music being quite disorganized, you will be provided with a large envelope that will have on it your name and the music titles in your possession. If you will **not** be attending the year-end meeting and party on June 24, please place all of your music in the envelope and return it to either Kathy Traub or Rose Quiello at the end of the concert. If you will be at the party, you may turn in the envelope containing your music at that time.

Please keep in mind that some of the music we use has been borrowed from other choruses and must be returned. The cost to replace lost or damaged music can be costly, so please help us avoid this extra expense.

Thank you for your cooperation.

GNHCC Committees

Last week, *News & Notes* profiled the Marketing and Publicity and Community Impact Committees. This week we'll highlight the Concert, Membership, and Social Committees.



Please consider signing up for one of our committees. The committees are essential to our strength and vitality and are where the seeds of our success are sewn. It's a fantastic way to connect with your fellow singers while helping the chorus to be even better than it is already.

At our June 24th Season Finale Party and annual meeting, we'll have sign-up sheets for each of the committees. In the meantime, if you have any questions please feel free to contact any of the current Committee Chairs or Board Members.



Refreshments:

If everyone can bring a little something we'll have a feast!



Father's Day Gift Basket:

As our last offering of the season, we'll be offering a special Father's Day gift basket at this week's rehearsal. You'll make Dad proud if you're the one to bring home this specially selected collection of gifts and goodies.



Concert Committee

The Concert Committee coordinates with the Artistic Director on concert objectives, rehearsal seating, and staging requirements. The committee coordinates all activities related to the concert (e.g., securing concert hall, delivery of risers). In addition, the committee develops and guides Chorus members on both rehearsal seating and concert logistics (places on stage, processing on/off, intermission seating).

The team coordinates and oversees ticket sales and distribution of complimentary tickets for all concerts and events; manages the creation, printing, and distribution of the concert program; coordinates submission of all concert information (including compositions, composers, sponsors, advertisers, etc.) ensuring the accuracy of all information, spelling, grammar, and advertising layout.

The Concert Committee also works in collaboration with Community Impact Committee to coordinate logistics for all GNHCC concerts and appearances throughout the community.



Membership Committee

The Membership Committee greets new members and guests arriving for rehearsals and follows up with them to ensure that they feel included. The committee maintains attendance records and membership rosters and collects registration fees. In addition the Membership Committee handles 'Sunshine Club' functions—keeping track of Chorus members' major life events or absences—and communicating important member news to the Chorus. The Membership Committee coordinates Chorus participation on trips and seeks out activities and opportunities for additional musical events of interest to the membership. The committee identifies and implements new recruitment methods and works to expand the strength and diversity of the Chorus. The Membership Committee also serves as liaison between Chorus members and the Board of Directors.



Social Committee

The Social Committee coordinates the logistics and clean up of refreshments for rehearsal breaks (includes scheduling, inventory, purchase, and serving of items) and tracks the monies donated for refreshments. The Social Committee organizes regular social events for Chorus members including the season kick-off party and the end of season wrap-party. The Committee develops social activities to foster camaraderie among Chorus members. In coordination with the Artistic Director, Board of Directors, and Membership Committee the Social Committee helps to develop plans for Chorus retreats, trips and other group outings.

Reminders:



Please be sure your music is in a black binder and organized in the following order:

1. Chichester Psalms
2. Life is Happiness Indeed
3. The Best of All Possible Worlds
4. It Must be So
5. This World
6. Make Our Garden Grow
7. West Side Story



One of our chorus members has requested that we remind everyone to remain quiet and attentive during rehearsal when other voice parts are being rehearsed.

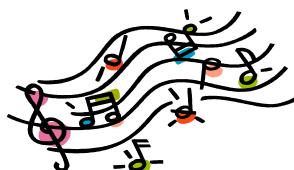
This is always important throughout the season but it's *especially* crucial now when we're so close to our performance dates.

Bring In Your Coins

It's been said that a penny saved is a penny earned. Let's see how many pennies (and nickels, dimes and quarters) we've saved for GNHCC in our coin banks. Please remember to bring in the coins you've collected and give them to Vickie Gerdon, Chair of the Finance and Fundraising Committee, who will have the coins counted, tally up the totals and let us know how we've done so far. Keep your banks and continue collecting coins for GNHCC throughout the summer. Then we'll do another collection and accounting of the counting, so to speak, in the fall.



A little bit of change will make a big difference for our chorus!



Member Corner



The Greater New Haven Community celebrates our two graduating seniors! You may recognize Lisa Edwards (left) and Chelsea Gizzi (right) as two-thirds of the smiling trio who welcome you to chorus each week. Both young women are seniors at Sacred Heart Academy in Hamden, and first found GNHCC while Chris Clowdus was the Musical Director at Sacred Heart. When he left, they followed him to chorus!

Chelsea and Lisa love singing all kinds of music, from Broadway to Brahms, and Chelsea is planning to dedicate her life to music-as a musicologist and educator. They both love to read and write and Lisa admits to being very "out-doorsy", naming the White Mountains in New Hampshire as her favorite place in the world.

While we congratulate them on their upcoming graduation from high school, we are surely going to miss them this fall when Chelsea goes off to Fordham University to major in Music and Philosophy, and Lisa attends Stonehill College in Easton, Massachusetts where she will major in Business and Communications, with a minor in art.

When asked for a favorite memory from chorus, Chelsea said, "this place is kind of like a second home" and Lisa remarked that she has enjoyed "opening the doors for rehearsals with my best friends, Ruth (Lombardi) and Chelsea".

We wish them all the best and look forward to hearing about their success in college, and visiting us during vacations.